

Autumn Term 1 2022 - Panda Class: Reception Learning Journey

Characteristics of Effective Learning:

- Playing and exploring - Investigate and 'have a go'
- Active learning - Engagement, motivation, perseverance & enjoying achievements.
- Creating and thinking critically - Developing their own ideas and strategies.

Mathematics:

- 'Getting to know you'.
- 'Just like me' - Matching, sorting, comparing size, comparing amounts, comparing lengths & repeating patterns.



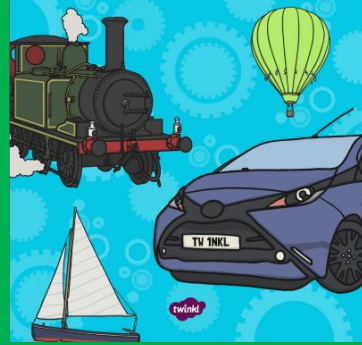
Personal, Social and Emotional Development (PSED):

- Jigsaw PSHE Programme - 'Being me in my world'
- Classroom and school rules; 'The Myddle Magic'.
- Turn taking, cooperative play & listening skills.
- Try new things and develop independence.



Our Topic:

Travel and Transport



Physical Development:

- Revise and refine the fundamental movement skills they have already acquired e.g. rolling, crawling, walking, jumping, running, hopping, skipping and climbing.
 - Progress towards a more fluent style of moving, with developing control and grace.
 - Develop their overall body strength, co-ordination, balance and agility needed to engage successfully with future physical education sessions.
- This half term's PE focus: Fundamentals & Invasion.
- Develop small motor skills to use a range of tools competently, safely and confidently e.g. pencils, paintbrushes, scissors, knives, forks and spoons.



Expressive Arts and Design - Exploring and using media and materials. Being imaginative:

- Explore, use and refine a variety of artistic effects to express their ideas and feelings.
- Explore the artist - Andy Goldsworthy.
- Create nature sculptures.
- Create collaboratively, sharing ideas, resources and skills - Collaborative art - Big Build.
- Listen attentively, move to and talk about music, expressing their feelings and responses.
- Sing in a group or on their own.
- Develop storylines in their pretend play.



Literacy - Reading and Writing:

- Read individual letters by saying the sounds for them.
- Blend sounds into words, so that they can read short words made up of known letter-sound correspondences.
- Read some letter groups that each represent one sound and say sounds for them.
- Read a few common exception words matched to our phonics.
- Form lower-case letters correctly.

Key Texts - Little Red Riding Hood, The Train ride by June Crebbin.



Understanding the World - People and communities. The world.

Technology:

- Talk about members of their immediate family and community.
- Name and describe people who are familiar to them.
- Comment on images of familiar situations in the past.
- Compare and contrast characters from stories, including figures from the past.
- Religions and beliefs - The Creation Story
- Our School Value - Compassion



Communication and Language:

- Understand how to listen carefully and why listening is important.
- Learn new vocabulary and use it throughout the day.
- Ask questions to find out more and to check they understand what has been said to them.
- Articulate their ideas and thoughts in well-formed sentences.
- Describe events in some detail.
- Develop social phrases e.g. "Good morning, how are you?"
- Engage in story times.

